



**BODS - Mecca Hajj September 2014**

Artist: Anne de Vries

Year: 2015

Dimensions: 340cm

Location: Andrea Rosen Gallery New York







**Public Display**

Artist: Anne de Vries

Year: 2022

Materials: Bronze coating, rusted patina,  
carved rigid foam core, metal bar, acrylic  
cables

Dimensions: 180 x 120 x 80 cm







**BIG LOAD**

Material: Sand, mixed media

Year: 2021

Dimensions: Variable

Location: FRAGILE



**FACE YOUR FREEDOM /  
SAVE THE WORLD**

Year: 2017 / 2021

Dimensions: 8 meters tall

Location: MOMENTUM: Nor-  
dic Biennale 2019

Location: Centraal Museum  
Utrecht





**Home Alone**

Artist: Anne de Vries

Year: 2022

Material: Rusted metal coating, patina,  
carved rigid foam core, ceramic toilet,  
plastic pipes.





**BIG LOAD**

Material: Sand, mixed media

Year: 2021

Dimensions: Variable

Location: FRAGILE



anne **de**  
VRIES



**DE WACHTER**

Artist: Anne de Vries

Material: Aluminum

Year: 2022

Dimensions: 220x230x500cm

Location: AIVD, Zoetermeer







anne *de*  
VRIES





**Boids - Tunisia Protest, January 2011**  
Artist: Anne de Vries  
Year: 2015  
Dimensions: 205cm  
Location: Andrea Rosen Gallery New York







**DE WACHTER**

Material: Aluminum

Year: 2022

Dimensions: 220x230x500cm

Location: AIVD, Zoetermeer



Anne de  
VRIES



**SAFE SPACE – Choco Relief**

Artist: Anne de Vries

Year: 2022

Materials: Brass coating, patina, resin core, and semi-customized 1/6 action figures.





**The Great Turn**

Artist: Anne de Vries

Year: 2022

Materials: Messing coating, patina,  
resin core, semi-customized 1/6 action  
figures.





**Little Herald**

Artist: Anne de Vries

Year: 2022

Materials: Brass, patina, resin core,  
customized 1/6 knight with aluminum  
armor, 1/6 police action figure.

Dimensions: 35 x 45 x 30 cm







**SUBMISSION**

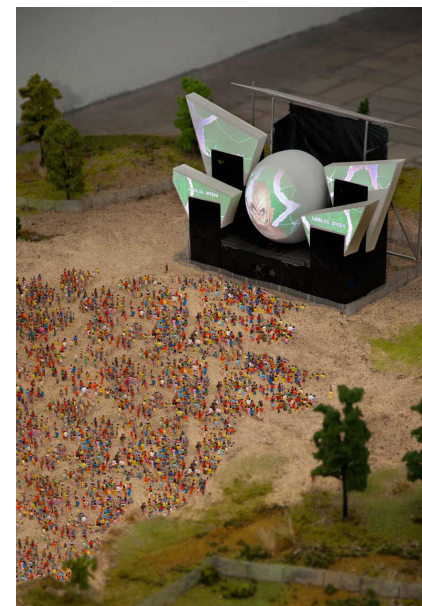
Year: 2015 - 2018

Material: 4 channel recorded audio phone conversation over audio system, 3 channel recorded livestream video projections, fiberglass, wood, plexiglass

Dimensions: variable.



anne *de*  
VRIES



### **OBLIVION Festival Stage**

Artist: Anne de Vries

Year: 2016 - 2022

Materials: Diorama in a scale of 1:87, presenting several texts produced for this installation.

Materials: sand, stones, wood, plastic, aluminum, paint, PVA, styrofoam, miniature advertisement campaign, miniature graffiti, miniature truss system, miniature LED projector, miniature Hi-Fi system. Exhibition views from Fries Museum, KUMU Museum Tallinn and the 9th Berlin Biennale.





**SUBMISSION**

Year: 2015 - 2018

Material: 4 channel recorded audio phone conversation over audio system, 3 channel recorded livestream video projections, fiberglass, wood, plexiglass

Dimensions: variable.





**Critical Mass : Pure Immanence**

Year: 2015

Dimensions: Video, 11 min, 4K

Location: Nuit Blanche, Paris, 2017



**Trails Rising**

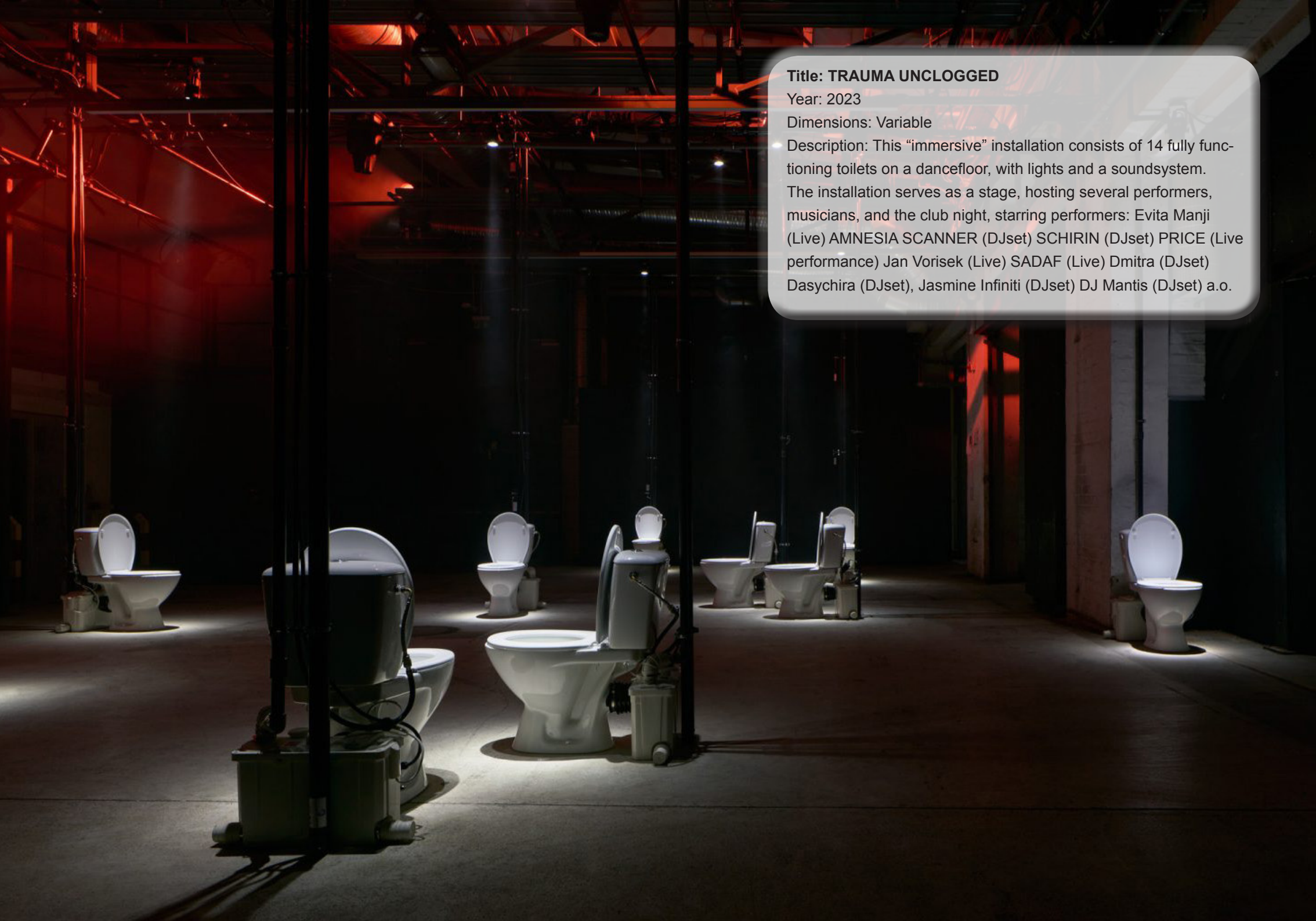
Year: 2012

Dimensions: Variable from 223 cm high up to 12 meters high

Location: Fluxia Milano, Frans Hals Museum Haarlem.







**Title: TRAUMA UNCLOGGED**

Year: 2023

Dimensions: Variable

Description: This “immersive” installation consists of 14 fully functioning toilets on a dancefloor, with lights and a soundsystem. The installation serves as a stage, hosting several performers, musicians, and the club night, starring performers: Evita Manji (Live) AMNESIA SCANNER (DJset) SCHIRIN (DJset) PRICE (Live performance) Jan Vorisek (Live) SADAF (Live) Dmitra (DJset) Dasychira (DJset), Jasmine Infiniti (DJset) DJ Mantis (DJset) a.o.





Entwurf zu 'kleine Freude' /  
Etude pour 'Petites joies'

Year: 2015

Dimensions: 517x347x50mm

Material: Archival UV print, Photo  
Forex, wooden frame, acrylic paint.





**Critical Mass : Pure Immanence**  
Year: 2015  
Dimensions: Video, 11 min, 4K  
Location: Nuit Blanche, Paris, 2017



anne de  
VRIES

## Stomping Grounds

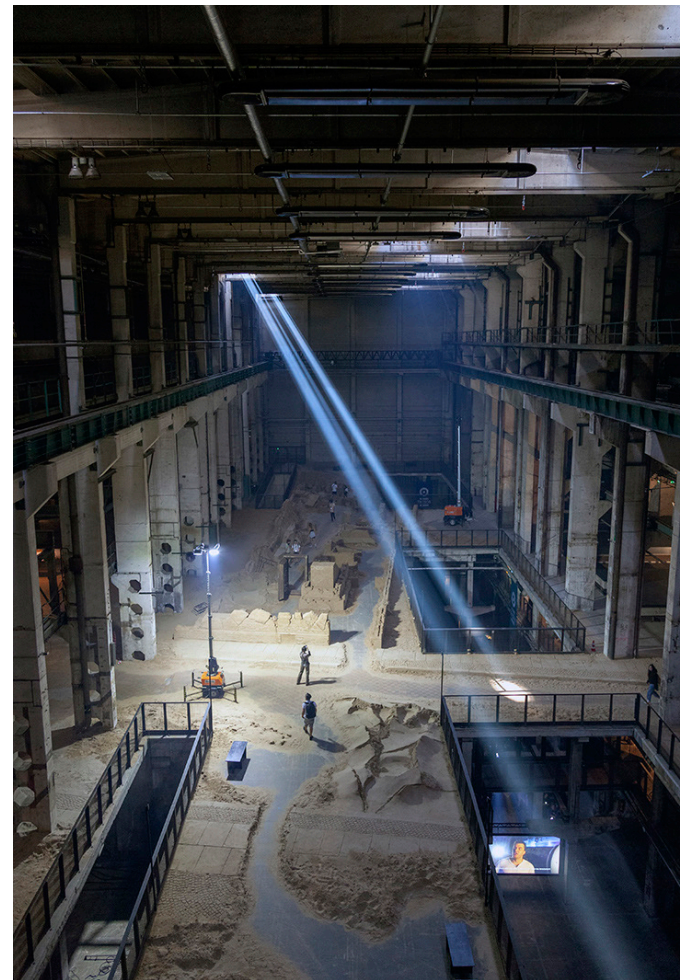
Year: 2022

Dimensions: 3000 m<sup>2</sup>

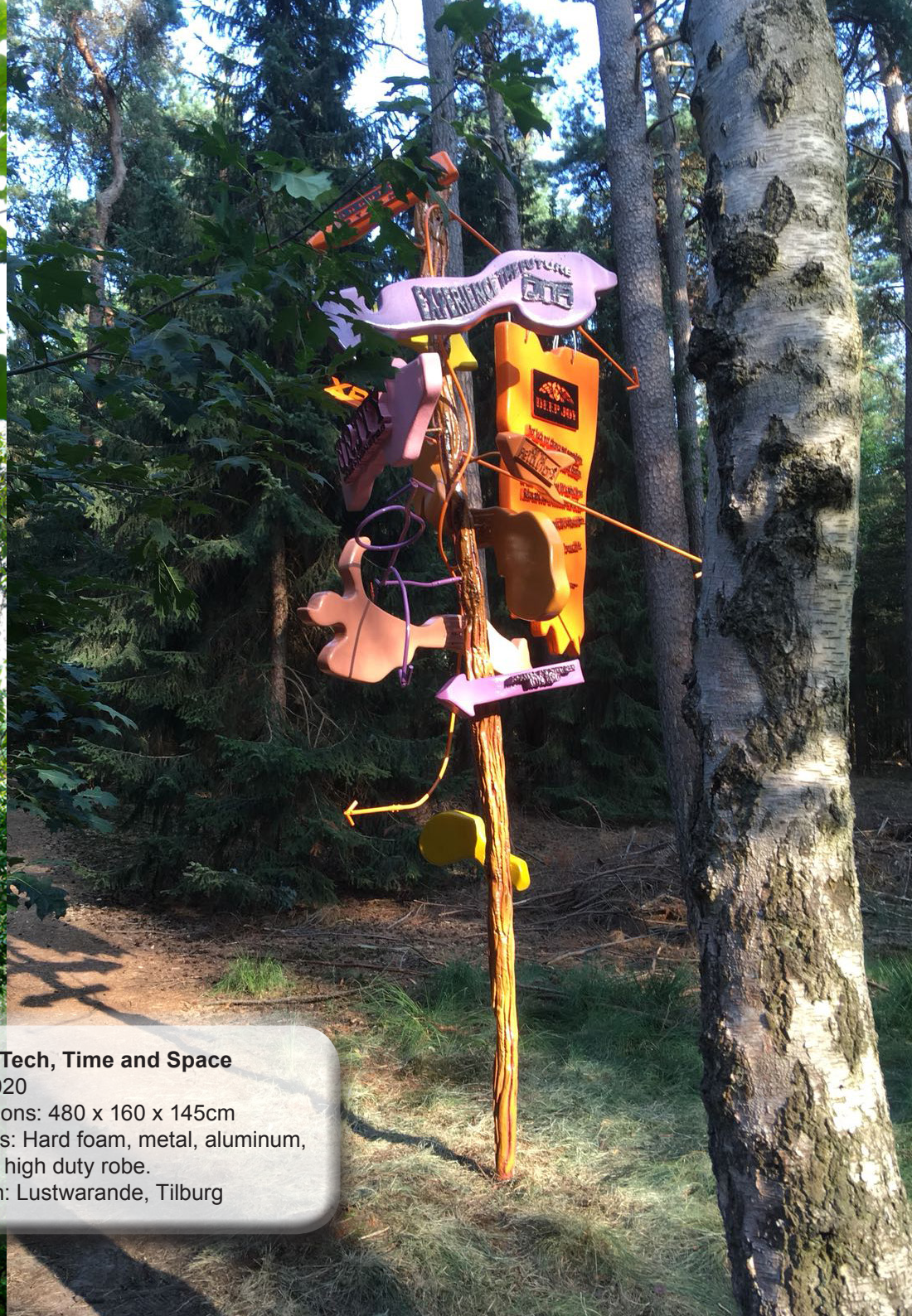
Material: 170 ton sand.

Location: Kraftwerk Berlin.

The art installation 'Stomping Grounds' is a 1:1 replica made from sand, of the giant gold vault, underneath the Jewish-owned Wertheim building which after a turbulent history, and the fall of the Berlin wall in 1989 became the cradle of techno music from Detroit, Chicago, UK, and of course Germany, known as Tresor.







**Lost in Tech, Time and Space**

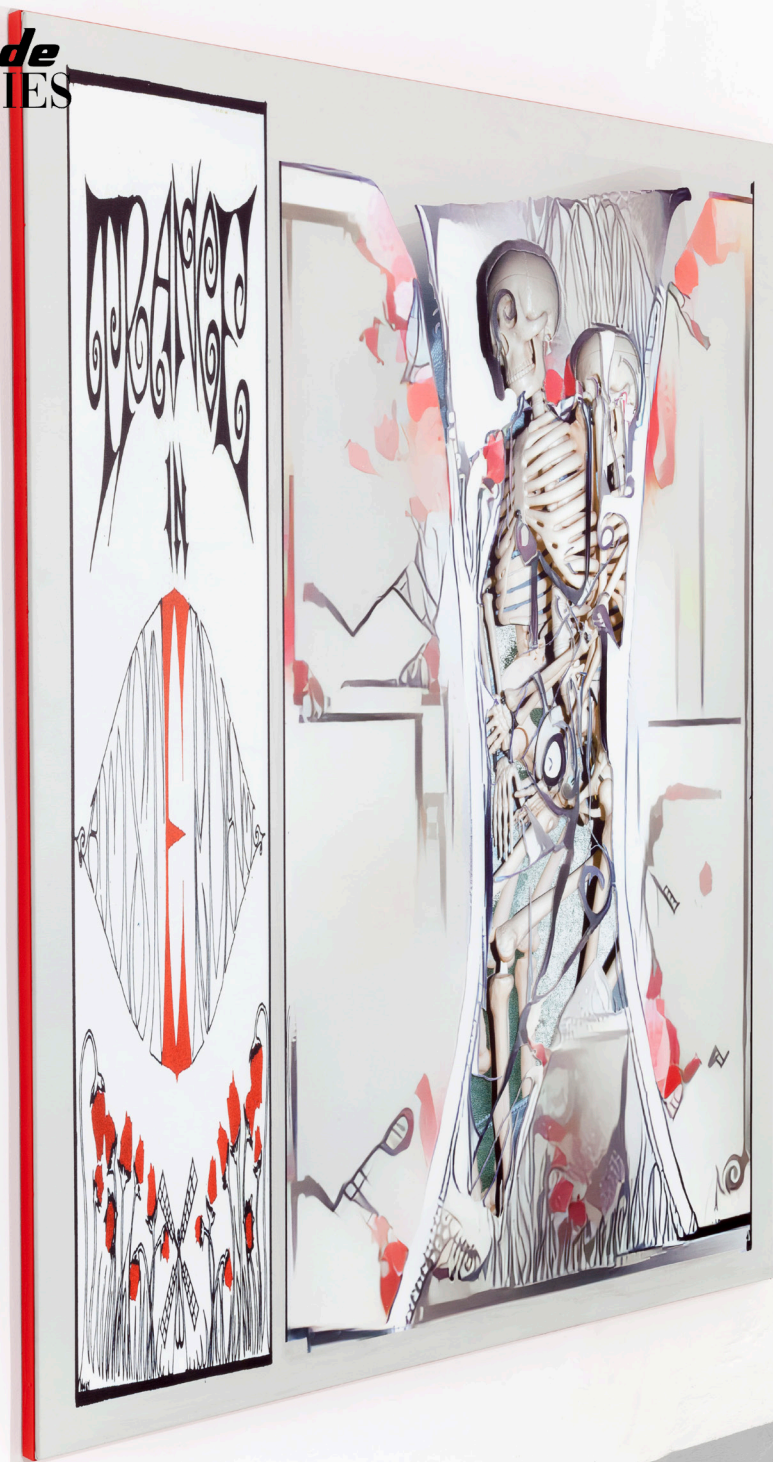
Year: 2020

Dimensions: 480 x 160 x 145cm

Materials: Hard foam, metal, aluminum,  
coating, high duty robe.

Location: Lustwarande, Tilburg





**Trance in Amsterdam – RETURNS**

Year: 2020

Size: 201 x 151 x 3,5 cm

Material: 380 g linen canvas, gesso, acrylic paint, oil paint, photography, AI-script, UV-print, aluminum stretcher, aluminum artist frame with coating.



**Title: In Control**

Year: 2022

Dimensions: Variable

Description: Description: A video work is surrounded by festival fences. The banners on the fencing advertise made-up future events, with actual dates and locations. It remains unclear what these events exactly will be; a party or a revolution. The visuals are a collage inspired by flyers for Tekno, Hardcore, and Bondage events. By closer inspection, we notice the events are taking place at the doorsteps of some of the most environmentally destructive corporations locally and worldwide.



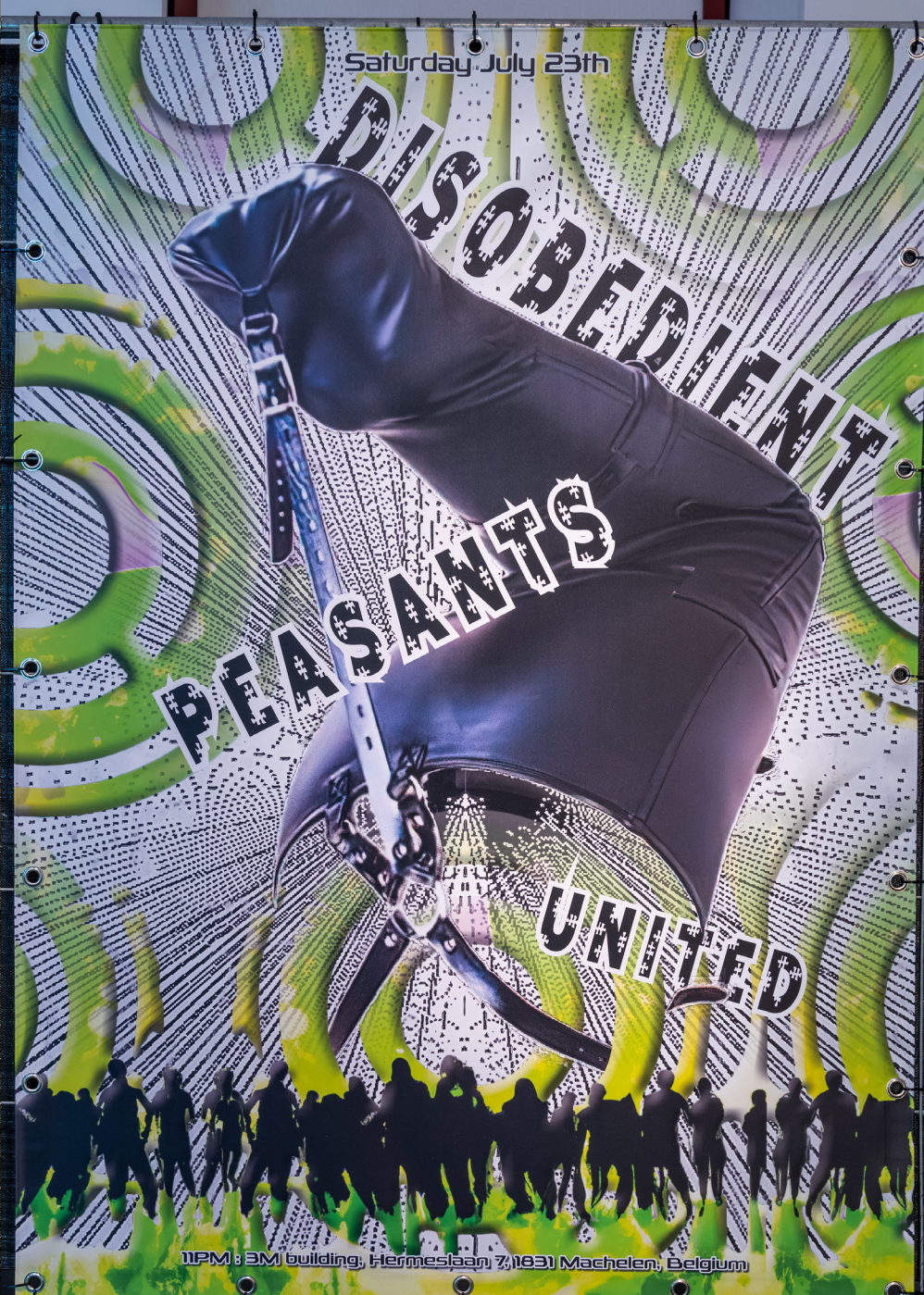


Saturday January 23th



11PM: ExxonMobil building, 55959 Las Colinas Blvd, Irving, TX 75039, United States

Saturday July 23th



11PM: 3M building, Hermeslaan 7, 1831 Machelen, Belgium



anne de  
vries



### DEEP SCROLL

Year: 2021

Discription: This is an artist publication produced in collaboration with AISSystem and Onomatopée. This limited edition contains contributions by Amalia Groom, Iain Hamilton Grant, Nicholas Korody, Theodore Gracyk, Gary Allen, Jesse Paul Crane-Seebe, Jenna Sutela, Alain Badiou, Ariella Azoulay, Steve Goodman, Robert Minto, Sarah Friend, Marcel Mrejen, Dorota Gawęda and Eglė Kulbokaitė, William Kherbek, Sam Jacob, and many others.

Published by Onomatopée.



Anne de VRIES

STEPS OF RECURSION

SCROLL

POV

METROPOLIS PRO GALLEY LINKS BACKS HYDRA

METROPOLIS

SUBMISSION

Homeless  
net

to an hour  
C ask, okay  
so all of them then?  
B The waiting list de-  
pends, but for couples it  
doesn't really take that  
long because we wait  
more and more in the  
same quantity.  
A Who all comes to the  
club? and what is the  
atmosphere like?  
B Allot of nice people  
come in so we are mixed  
between all singles and  
couples.  
C So pretty much every  
body is welcome?  
B Oh yeah everybody is  
welcome here, yeah, it's  
even the first time you  
come most people com-  
ment how friendly it is.  
D There are minor rules  
no drugs no fighting,  
things like that.  
Common courtesy stuff.

NIGHT WATCH PARKING LOT

BLACK ICE

The Eye and the Spine

INTERFACE LISTENING

BLACK ICE

Listening

AI GPT2 RESPONSE

AI GPT2 RESPONSE

Places to See 2013, 105 x 45 x 45 cm, stainless steel, oil print on polished and mirrored

POWER/KNOWLEDGE  
Selected Interviews and Other Writings  
1972-1977

Edited by  
COLLIN GORDON

Translated by  
COLLIN GORDON, LEO MARSHALL,  
JOHN MEFHAM, KATE SOPER

CULTURED BRAIN  
Translated by  
COLLIN GORDON, The Obelisk  
Press, published in paperback, 2002

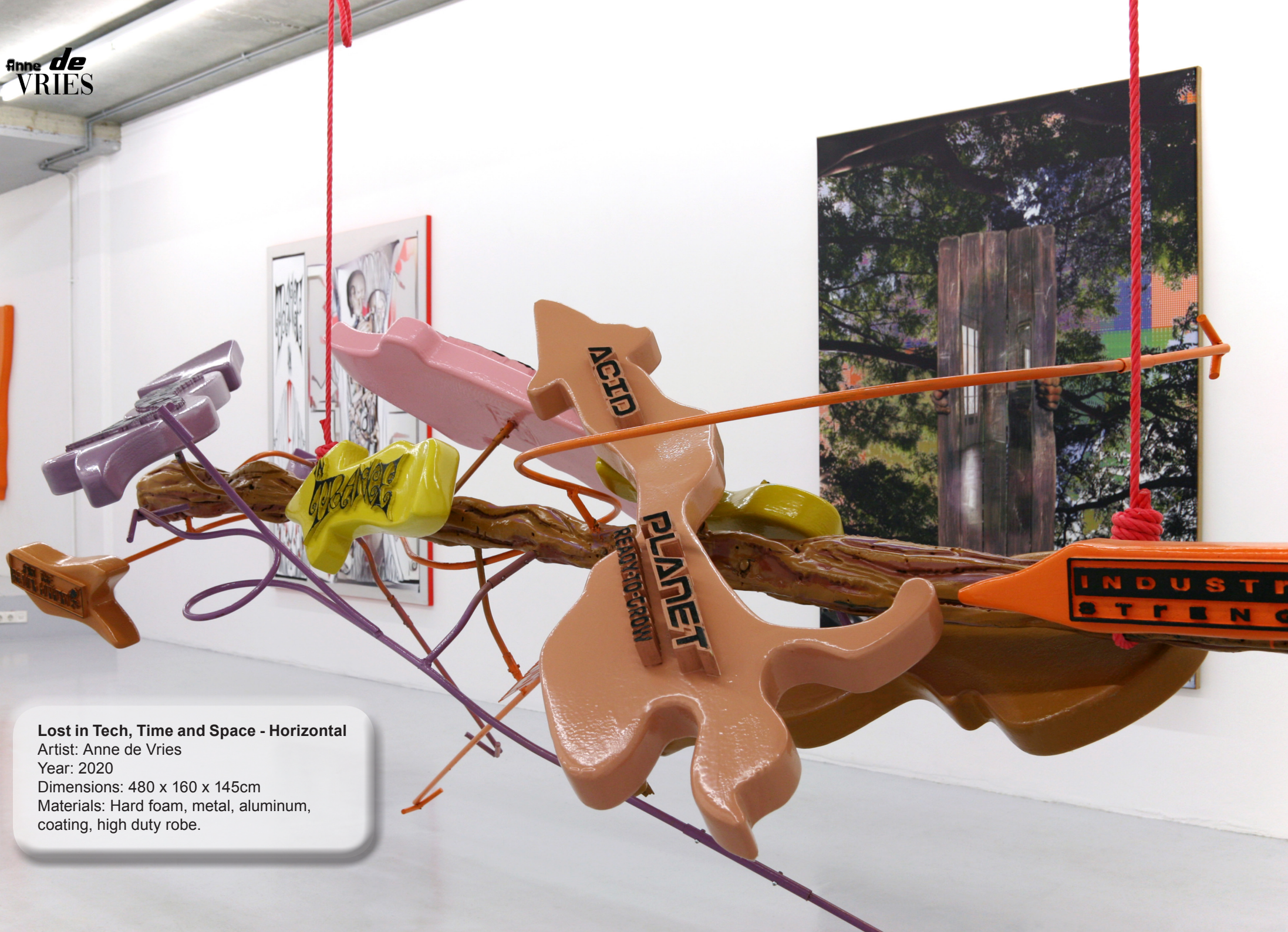
The 9/11 We Eat

Soil from the naturopark Hoher Flaming, Anal  
Blutkreis: SAE 10W-40, Sonax Xtraseal, and  
Bosch & Henrichs konzentriert Nano Pro, Spinn  
Vitamin Water, acrylic pipes, rubber corks,  
stainless steel, gaiter, vinylform, cement glue

AI GPT2 RESPONSE

Pages from  
DEEP SCROLL  
with work from  
last 10 years.





**Lost in Tech, Time and Space - Horizontal**

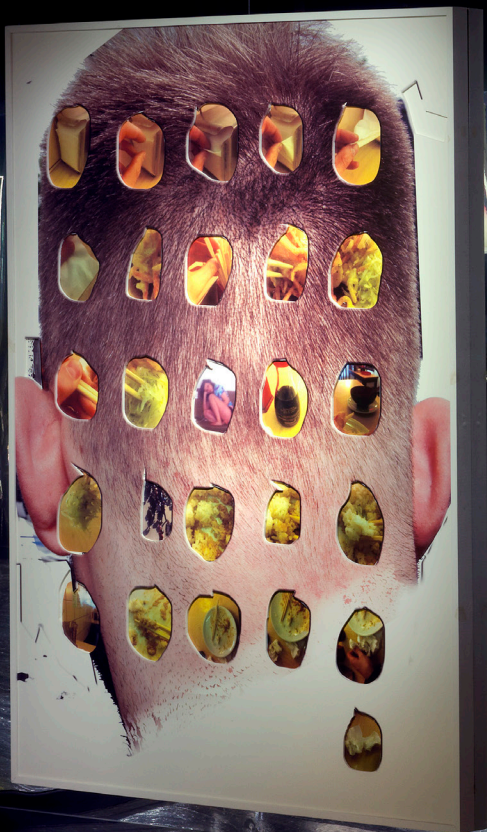
Artist: Anne de Vries

Year: 2020

Dimensions: 480 x 160 x 145cm

Materials: Hard foam, metal, aluminum,  
coating, high duty robe.





**INTERFACE – Musashi &  
INTERFACE – Tax Free Zone**

Year: 2014-2019

Dimensions: 164 x 124 cm

Materials: 2 digital prints on 2 sheets  
of Forex, with digital cut-outs, painted  
wooden frame..





**Steps of Recursion on rail – ICG**

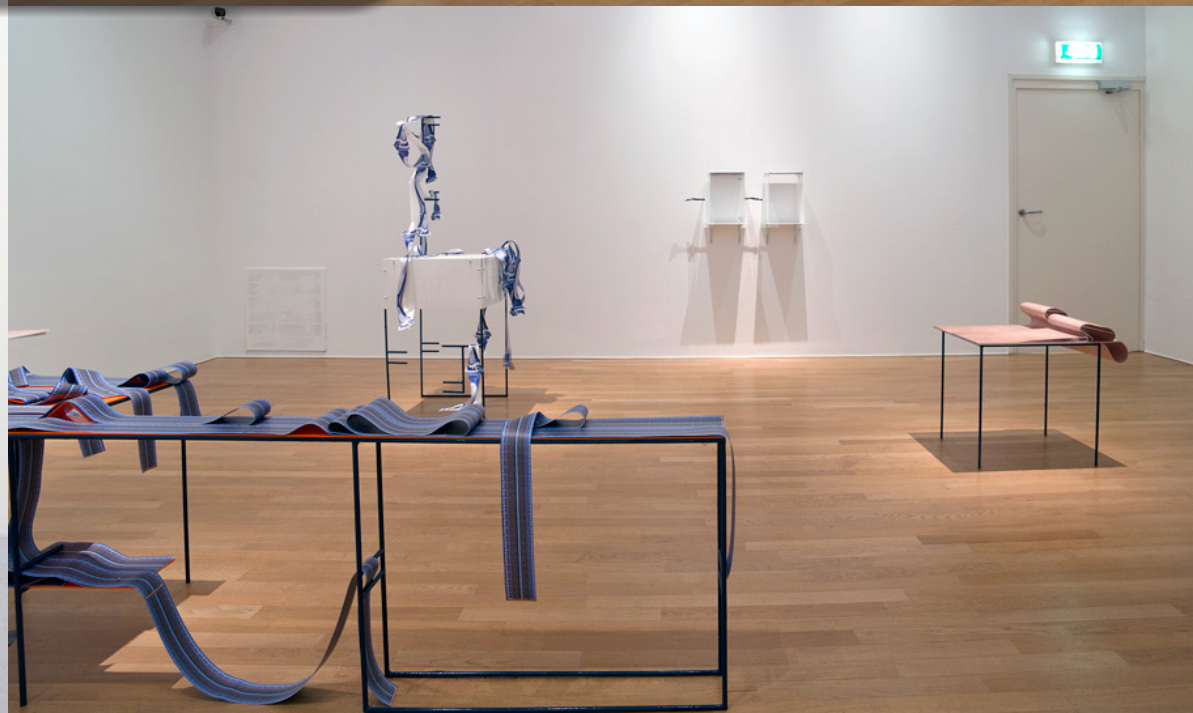
Artist: Anne de Vries

Year: 2012

Size: 135 x 110 x 75 cm

Material: steel frame, UV print, plastic

A lot of this body of work is inspired by “The dream of King Camp Gillette.” and his proposal for the ideal city. Before perfecting his invention of the safety razor and founding what became a major American industrial and sales enterprise, King Camp Gillette (1855-1932) authored several books and pamphlets calling for radical changes in the country’s economic and social system. The first of these polemical tracts, *The Human Drift*, called for the establishment of an ideal society to be created by The United Company “Organized for the purpose of Producing, Manufacturing, and Distributing the Necessities of Life.” Except for agricultural and other rural pursuits, all activities and all the population would be concentrated in one giant and hyper-designed mega-city, using high-tech materials and systems, to build an urban complex that Gillette called “Metropolis.”





**SAFE SPACE – Tickle Play**

Artist: Anne de Vries

Year: 2022

Materials: Bronze coating, patina, hard  
polylactic acid core, semi-customized  
1/6 action figures.





